

MONTHLY MEMBERSHIP PROGRESS REPORT

LOCATION WASHINGTON

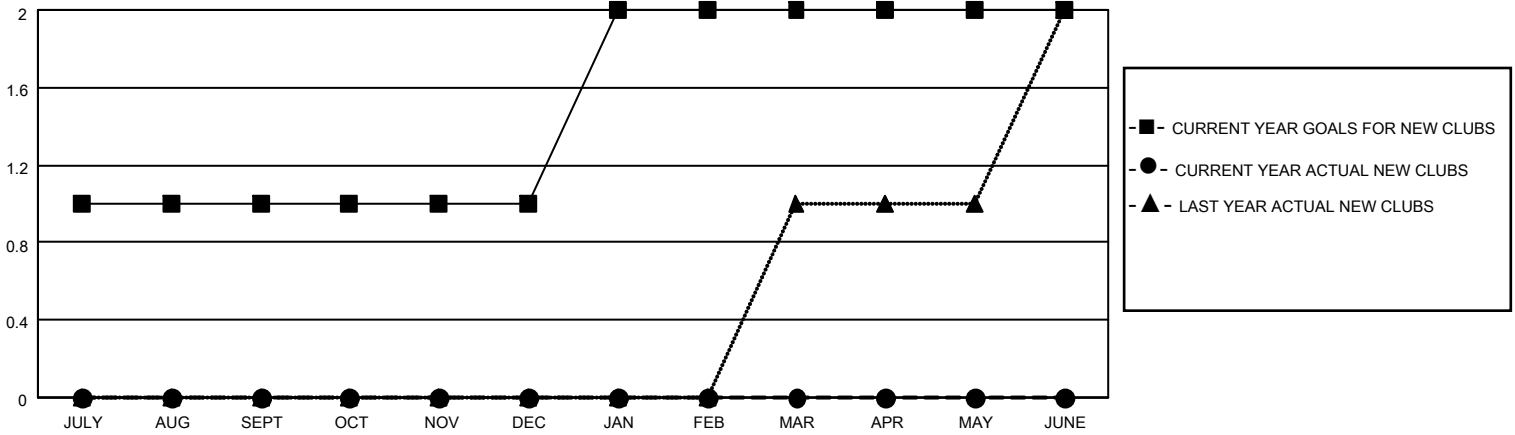
District 19 I

Results as of: 1/31/2021

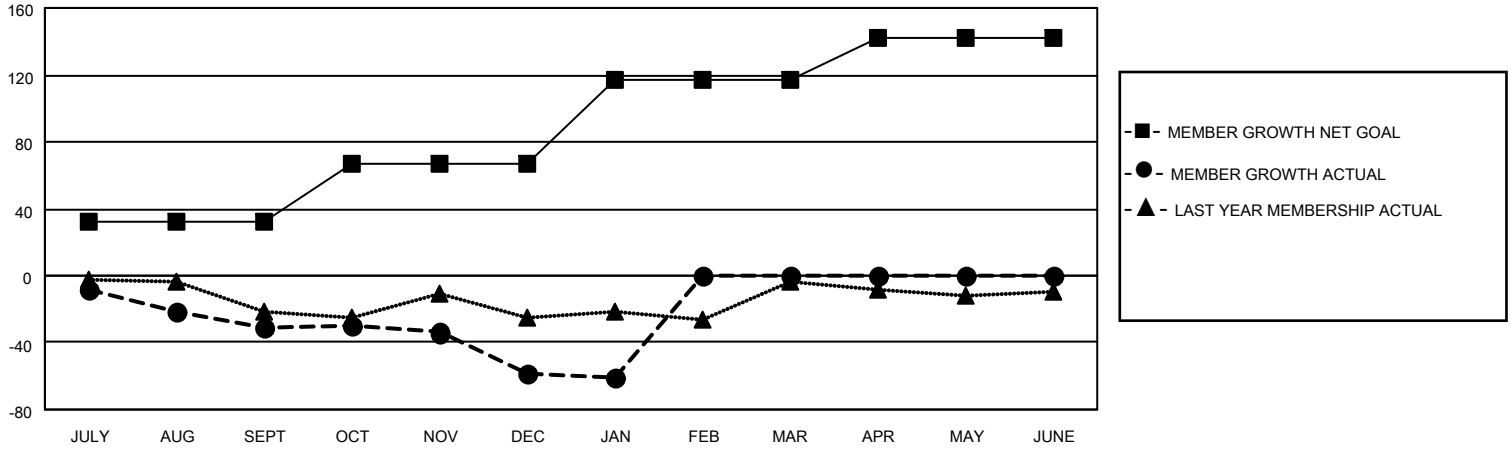
Clubs			
RESULTS FOR 2020-2021			
QUARTER	NEW CLUB GOAL	NEW CLUBS	DROPPED CLUBS
JULY/AUG/SEPT	1	0	0
OCT/NOV/DEC	0	0	0
JAN/FEB/MAR	1	0	1
APR/MAY/JUNE	0	0	0

Members			
RESULTS FOR 2020-2021			
QUARTER	MEMBER GROWTH NET GOAL	MEMBER GROWTH ACTUAL	DROPPED MEMBERS ACTUAL (including transfers)
JULY/AUG/SEPT	32	4	35
OCT/NOV/DEC	35	28	51
JAN/FEB/MAR	50	7	6
APR/MAY/JUNE	25	0	0

GOALS AND ACTUAL NEW CLUBS CUMULATIVE



GOALS AND ACTUAL MEMBERS CUMULATIVE



DROPPED CLUBS: 1

16 CLUBS OF 50 ADDED 1 OR MORE NEW MEMBERS

GENDER DISTRIBUTION

MALE 720 (61.49%)
FEMALE 451 (38.51%)

DROPPED MEMBERS

DECEASED	10
CLUB CANCELLED	0
OTHER	82
TOTAL	92

[CLICK HERE FOR CUMULATIVE MEMBERSHIP DATA](#)

TOTAL FAMILY UNIT MEMBERS	225
FAMILY MEMBERS PAYING HALF DUES	113